

◆ **Some data-driven reflections on priorities in AIDS network research.**

Dr. Samuel Friedman

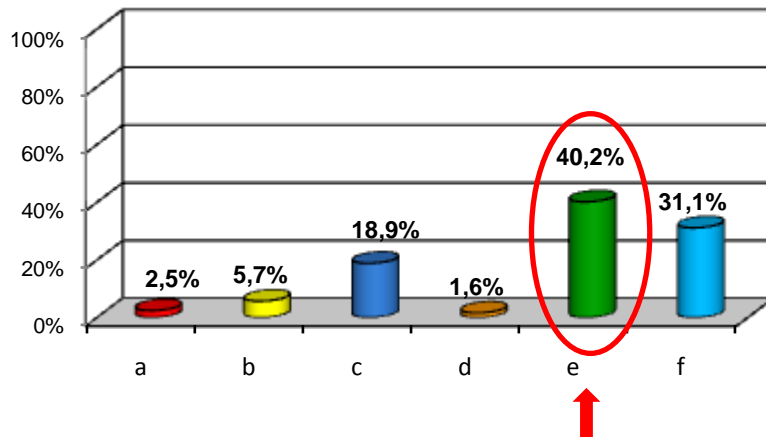
What characteristics of risk networks are likely to increase the rate of HIV through a community?

- a) Large connected components
- b) Many dense microstructures
- c) Group sex participation by drug users, gay men and lesbians
- d) Widespread intravention
- e) a, b and c, but not d
- f) I do not know; I'm coming to learn.

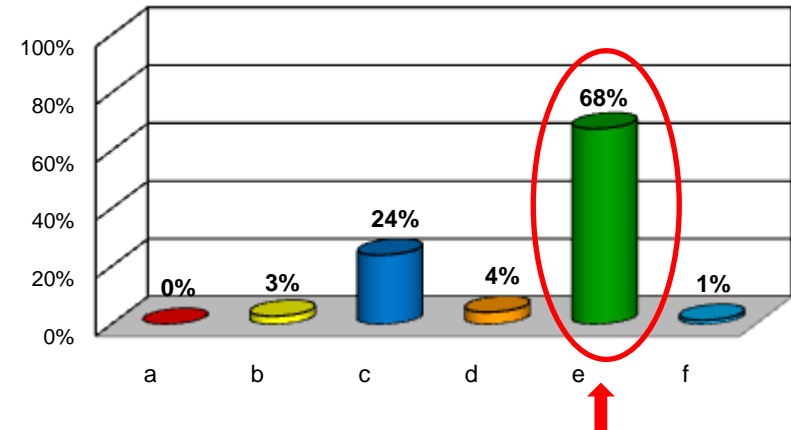
p18	%	n
a	2,5%	3
b	5,7%	7
c	18,9%	23
d	1,6%	2
e	40,2%	49
f	31,1%	38
Total	100,0%	122

P - 28	%	n
a	0%	0
b	3%	2
c	24%	17
d	4%	3
e	68%	48
f	1%	1
Total	100,0%	71

n=122



n=71



NOTA EDITORIAL: Cambio en el conocimiento: **+67,9%**, generado principalmente por quienes tenían "desconocimiento total" (-2,129% para la opción "f"). Estimula la implementación de iniciativas de investigación, desde las ciencias sociales.